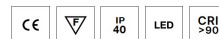
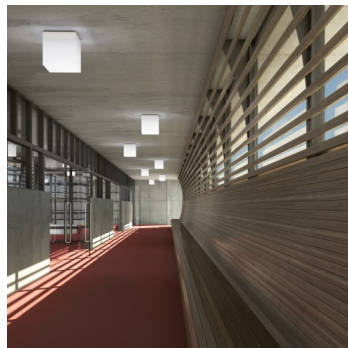
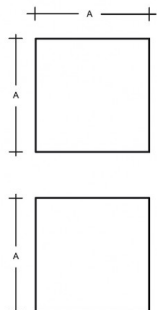


IZAR C IC.L2.440.XY

Type: ceiling and wall lamp

Lampshade: acrylic glass; acrylic glass, sides white (.91) or black (.93)

Light body: white painted steel plate



W	K	Module luminous flux lm	Luminaire luminous flux lm	A	DALI 1	DALI 2	CORR	Emergency	Motion sensor	Bluetooth	Track system	Weight
24,8	4000	3585	2980	440	L	M	N*	-	P*	Q*	-	9700

Lucis IC.L2.440.X IZAR C LED / LDC (Polar)

Voltage: 230V

IK code: IK06

Ballast: Driver

CRI: >80

LED life: L80/F10 50000 hours

Watt: 24,8 W

Color temperature: 4000 K

Module luminous flux: 3585 lm

Luminaire luminous flux: 2980 lm

A: 440 mm

Dali 1: Available

Dali 2: Available

Corridor function: Available on inquiry

Motion sensor: Not available

Emergency module: Available on inquiry

Bluetooth control: Available on inquiry

Track system: Not available

Weight: 9700 g

Luminaire: Lucis IC.L2.440.X IZAR C LED
Lamps: 1 x LED 2157

