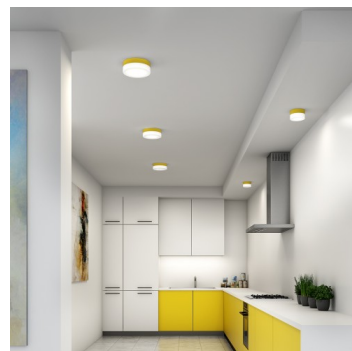
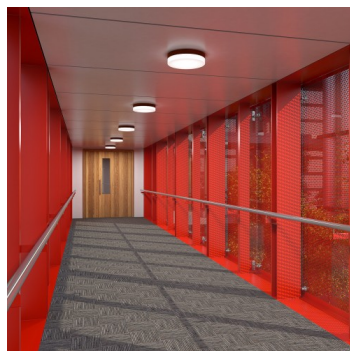
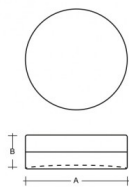


NOMIA BS44.K3.N44.XY

**Type:** ceiling and wall lamp

**Lampshade:** white, hand-blown, three-layered glass, satin opal matt

**Light body:** painted aluminium - RAL white 9003 (.31), RAL black 7021 (.33), RAL yellow 1018 (.35), RAL Argento dorato (.70) or RAL Gold (.71)



W	K	Module luminous flux lm	Luminaire luminous flux lm	A	B	DALI 1	DALI 2	CORR	Person icon	Person icon	Bluetooth	Emergency	Weight
29	3000	3945	2643	440	80	-	M	N*	O*	P*	Q*	-	4400

**Voltage:** 230V

**CRI:** >90

**LED life:** L80/F10 50000 hours

**Watt:** 29 W

**Color temperature:** 3000 K

**Module luminous flux:** 3945 lm

**Luminaire luminous flux:** 2643 lm

**A:** 440 mm

**B:** 80 mm

**Dali 1:** Not available

**Dali 2:** Available

**Corridor function:** Available on inquiry

**Motion sensor:** Available on inquiry

**Emergency module:** Available on inquiry

**Bluetooth control:** Available on inquiry

**Track system:** Not available

**Weight:** 4400 g

Lucis BS44.K3.N44.X NOMIA LED / LDC (Polar)

Luminaire: Lucis BS44.K3.N44.X NOMIA LED  
Lamps: 1 x LED G5

