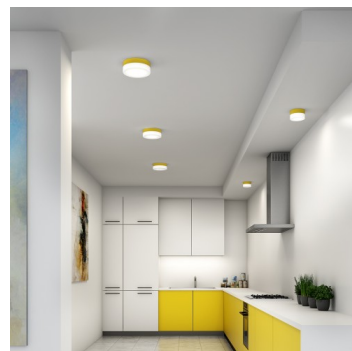
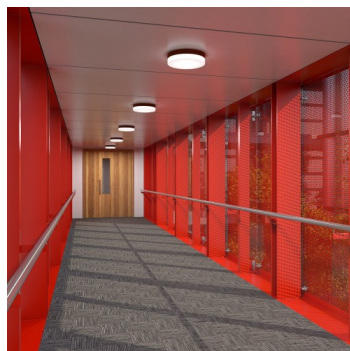
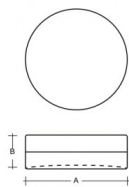


NOMIA BS44.K2.N44.XY

**Type:** ceiling and wall lamp

**Lampshade:** white, hand-blown, three-layered glass, satin opal matt

**Light body:** painted aluminium - RAL white 9003 (.31), RAL black 7021 (.33), RAL yellow 1018 (.35), RAL Argento dorato (.70) or RAL Gold (.71)



| W    | K    | Module luminous flux lm | Luminaire luminous flux lm | A   | B  | DALI 1 | DALI 2 | CORR | Handicap | Stair | Bluetooth | Emergency | Weight |
|------|------|-------------------------|----------------------------|-----|----|--------|--------|------|----------|-------|-----------|-----------|--------|
| 44,5 | 4000 | 6087                    | 4078                       | 440 | 80 | -      | M      | N*   | O*       | P*    | Q*        | -         | 4400   |

**Voltage:** 230V

**CRI:** >90

**LED life:** L80/F10 50000 hours

**Watt:** 44,5 W

**Color temperature:** 4000 K

**Module luminous flux:** 6087 lm

**Luminaire luminous flux:** 4078 lm

**A:** 440 mm

**B:** 80 mm

**Dali 1:** Not available

**Dali 2:** Available

**Corridor function:** Available on inquiry

**Motion sensor:** Available on inquiry

**Emergency module:** Available on inquiry

**Bluetooth control:** Available on inquiry

**Track system:** Not available

**Weight:** 4400 g

Lucis BS44.K2.N44.X NOMIA LED / LDC (Polar)

Luminaire: Lucis BS44.K2.N44.X NOMIA LED  
Lamps: 1 x LED G5

