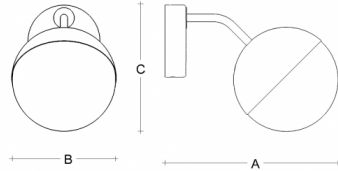
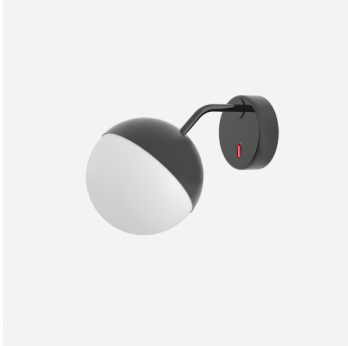


SEMILUNA SR.L2.S200.XYV

Type: wall lamp

Lampshade: white, hand-blown, three-layered glass, satin opal matt

Metal parts: painted steel plate RAL 9003 (.60), RAL 9005 (.61), RAL Bronze (.73) or RAL Chrom (.77)



W	K	Module luminous flux lm	Luminaire luminous flux lm	A	B	C	DALI 2	IK01	IP20	Bluetooth	Emergency	Weight
8,3	4000	1146	688	340	200	250	M	-	-	-	-	3300

Voltage: 230V

IK code: IK01

Ballast: Driver

CRI: >90

LED life: L80/F10 50000 hours

Watt: 8,3 W

Color temperature: 4000 K

Module luminous flux: 1146 lm

Luminaire luminous flux: 688 lm

A: 340 mm

B: 200 mm

C: 250 mm

Dali 2: Available

Motion sensor: Not available

Emergency module: Not available

Bluetooth control: Not available

Track system: Not available

Sádrokarton: Not available

Weight: 3300 g

Lucis SR.L2.S200.X SEMILUNA LED / LDC (Polar)

Luminaire: Lucis SR.L2.S200.X SEMILUNA LED
Lamps: 1 x LED G6

